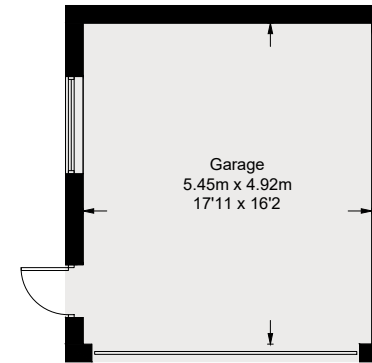


71 Pen-y-Bryn Road, Upper Colwyn Bay, LL29 6AH

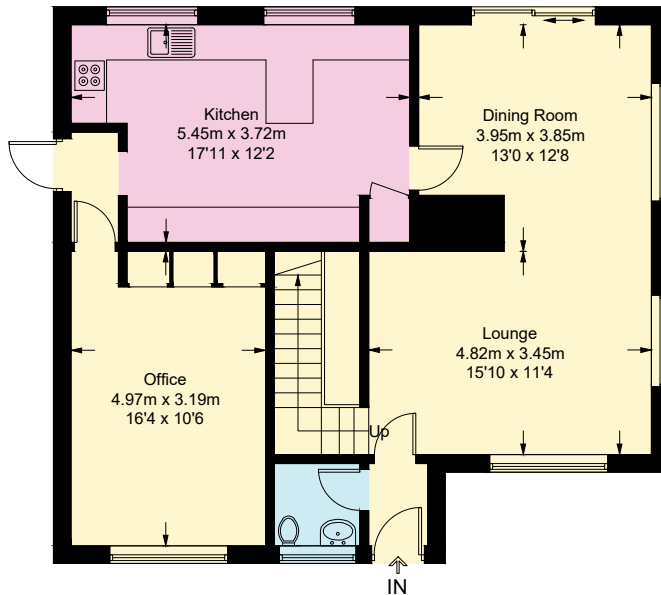
Approximate Gross Internal Area = 154.0 sq m / 1658 sq ft

Garage = 26.9 sq m / 289 sq ft

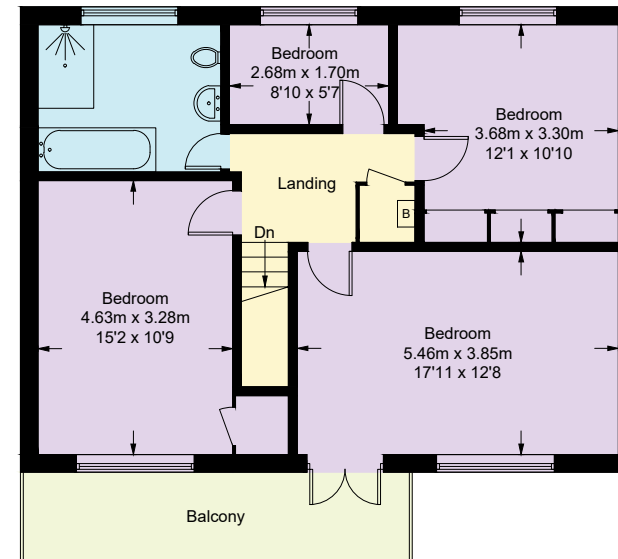
Total = 180.9 sq m / 1947 sq ft



(Not Shown In Actual
Location / Orientation)



Ground Floor



First Floor

This plan is for layout guidance only. Not drawn to scale unless stated. Windows and door openings are approximate. Whilst every care is taken in the preparation of this plan, please check all dimensions, shapes and compass bearings before making any decisions reliant upon them.

Fourlabs.co © (ID1220046)